

Light Shadow Spot 60

LED accent lighting module for installation in The Tracking Magnet or Infra-Structure systems.

Description

A range of spots that offers the exclusive and patented Flos technology for its Light Shadow family of luminaires, with double focal lenses and high shielding optical body and maximum visual comfort. The unbeatable treatment of the raw light source flux results in an excellent Light Output Ratio in any of its beam angles. This, together with an even and impeccable light distribution, makes this family of spotlights the perfect lighting tool for the most demanding professional projects.

Lamp

Lamp Type	LED Array
Wattage Super Spot	10W
Wattage S / M / F / WF	20W
Initial Lumens Super Spot	799 lm / 844 lm
Initial Lumens S / M / F / WF	1593 lm / 1751 lm
Color Temperature	2700K / 3000K
Color rendering	CRI 90

Optical

Beam Angle	SS - 9° / S - 15° / M - 26° / F - 33° / WF - 43°
Lighting Type	Direct
Light Distribution	Symmetric

Physical

Material	Aluminum
Aiming	Adjustable
Weight	1 Lbs
Ingress Protection Rating	IP20
Maximum tilt Angle	90°
Rotation	360°

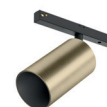
Finishes

☐ 40 White

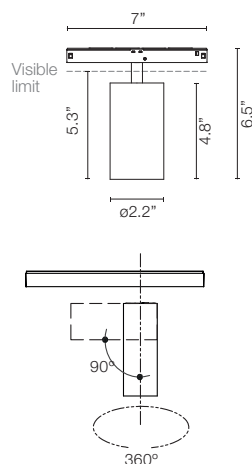
☐ 14 Black

☐ ER = Brushed Steel

☐ ES = Brushed Bronze



Dimensions



Certifications



Photometrics

For current IES files please visit arch.flosusa.com

Warranty

2 years from date of sale.



Light Shadow Spot 60

LED accent lighting module for installation in The Tracking Magnet or Infra-Structure systems.

Electrical & Control

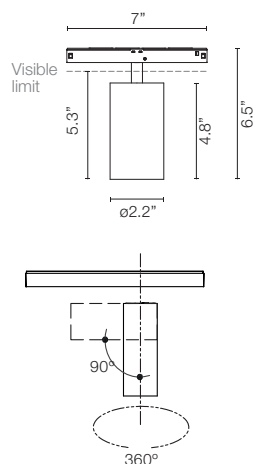
Driver location	Remote
Driver Input Voltage	120V-277V
Forward Voltage	48V
Current mA Super Spot	250mA
Current mA S / M / F / WF	500mA
Control	Dimmer on Board, 1-10V, DALI, Casambi
Class	2

Performance

Maximum delivered output	up to 1304 lm / up to 1431 lm
Efficacy	up to 143 lm/W



Dimensions



Certifications



Photometrics

For current IES files please visit arch.flosusa.com

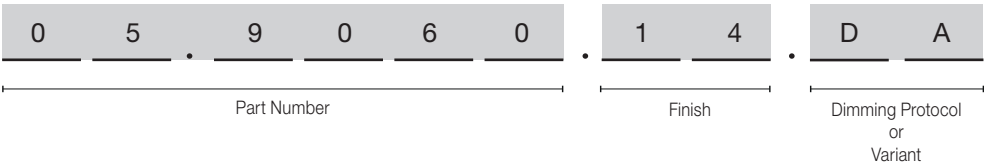
Warranty

2 years from date of sale.

Light Shadow Spot 60

LED accent lighting module for installation in The Tracking Magnet or Infra-Structure systems.

How to specify



CCT	CRI	Initial Lumens	Delivered Lumens	Watts	Beam Spread	Part Number	Finish	Dimming Protocol
3000	90	844	808	10	9°	05.9065	<div><div></div> 40 = White</div> <div><div></div> 14 = Black</div> <div><div></div> ER = Brushed Steel</div> <div><div></div> ES = Brushed Bronze</div>	Dimmable on Board 1V = 0-10V, 10% Dimming CB = Dimmable Casambi DA = DALI, 10% Dimming
2700	90	799	765	10	9°	05.9060		
3000	90	1751	1375	20	15°	05.9066	<div><div></div> 40 = White</div> <div><div></div> 14 = Black</div> <div><div></div> ER = Brushed Steel</div> <div><div></div> ES = Brushed Bronze</div>	Dimmable on Board 1V = 0-10V, 10% Dimming CB = Dimmable Casambi DA = DALI, 10% Dimming
2700	90	1593	1251	20	15°	05.9061		
3000	90	1751	1427	20	26°	05.9067	<div><div></div> 40 = White</div> <div><div></div> 14 = Black</div> <div><div></div> ER = Brushed Steel</div> <div><div></div> ES = Brushed Bronze</div>	Dimmable on Board 1V = 0-10V, 10% Dimming CB = Dimmable Casambi DA = DALI, 10% Dimming
2700	90	1593	1298	20	26°	05.9062		
3000	90	1751	1431	20	33°	05.9068	<div><div></div> 40 = White</div> <div><div></div> 14 = Black</div> <div><div></div> ER = Brushed Steel</div> <div><div></div> ES = Brushed Bronze</div>	Dimmable on Board 1V = 0-10V, 10% Dimming CB = Dimmable Casambi DA = DALI, 10% Dimming
2700	90	1593	1304	20	33°	05.9063		
3000	90	1751	1390	20	43°	05.9069	<div><div></div> 40 = White</div> <div><div></div> 14 = Black</div> <div><div></div> ER = Brushed Steel</div> <div><div></div> ES = Brushed Bronze</div>	Dimmable on Board 1V = 0-10V, 10% Dimming CB = Dimmable Casambi DA = DALI, 10% Dimming
2700	90	1593	1268	20	43°	05.9064		

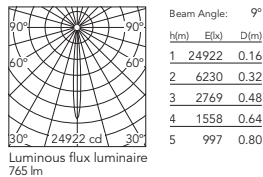
Light Shadow Spot 60

LED accent lighting module for installation in The Tracking Magnet or Infra-Structure systems.

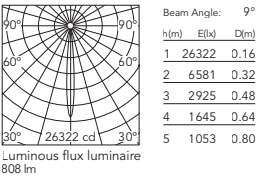
Photometric

Super Spot 9°

2700K

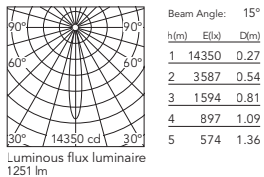


3000K

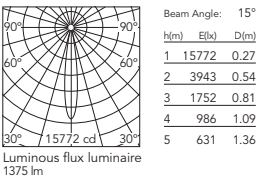


Spot 15°

2700K

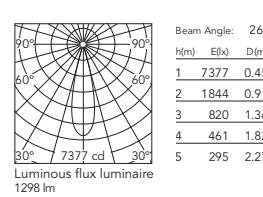


3000K

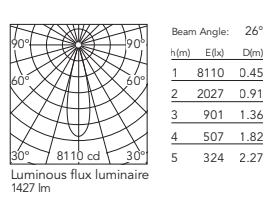


Medium 26°

2700K

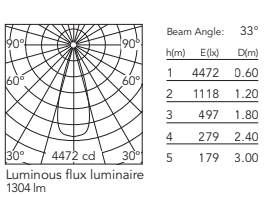


3000K

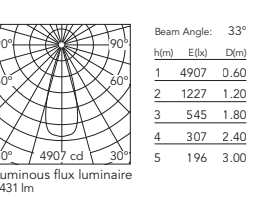


Flood 33°

2700K

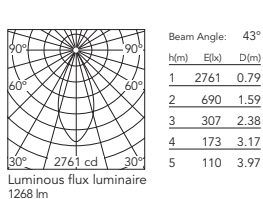


3000K

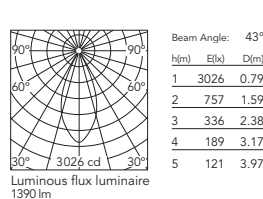


Wide Flood 43°

2700K







3000K



Light Shadow Spot 60

LED accent lighting module for installation in The Tracking Magnet or Infra-Structure systems.

Optional Accessories

Honeycomb Super Spot		Honeycomb Spot / Medium / Flood / Wide Flood	
Part Number:		Part Number:	
08.0175.14		08.0176.14	
			
INCREASE		INCREASE	
Dicroic Super Spot	2700K >> 3125±75K 3000K >> 3600±75K	Dicroic Spot / Medium / Flood / Wide Flood	2700K >> 3125±75K 3000K >> 3600±75K
Part Number:		Part Number:	
08.0796.00		08.0798.00	
			
DECREASE		DECREASE	
Dicroic Super Spot	2700K >> 2450±75K 3000K >> 2700±75K	Dicroic Spot / Medium / Flood / Wide Flood	2700K >> 2450±75K 3000K >> 2700±75K
Part Number:		Part Number:	
08.0797.00		08.0799.00	
